

Morgans

PROPERTY

8 Viewfield Terrace, Dunfermline, KY12 7HZ

Fixed Price £449,950







We are delighted to be marketing this substantial and distinguished Victorian period home situated in the heart of the City Centre. These villa's are rarely available in today's market and this particular property is offered in move in condition having undergone a complete renovation of works to enhance the existing fabulous period features and offering contemporary and stylish living for families and professionals. The generous accommodation briefly comprises entrance vestibule leading through to welcoming reception hallway with original hardwood balustrade, storage and front facing formal sitting room with bay and ceiling rose. Modern dining kitchen and breakfast bar with French doors to garden, there is also a bathroom on the ground floor and fifth bedroom which is versatile and could be a further lounge or office. On the upper level there are four bedrooms ,shower room and a further bathroom in the master suite. A small front garden and fully enclosed walled garden to rear providing a child and pet safe environment with patio and seating area. External storage. The property has gas central heating throughout and sash and case windows. New boiler (2021). Residents permit parking can be obtained from local council at a nominal annual charge. Parking is free in bays adjacent to the property or in Viewfield Terrace.



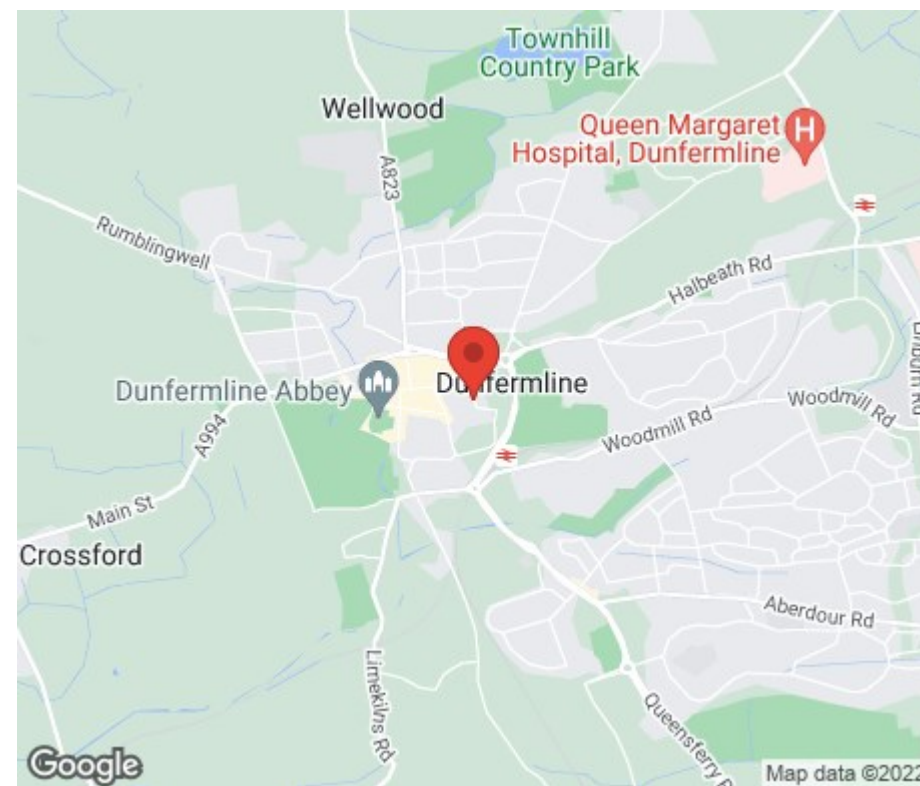


LOCATION

Viewfield Terraced is situated in the heart of the City Centre surrounded by traditional period homes. The Royal Burgh of Dunfermline is of considerable historic interest and is the resting place of King Robert the Bruce. Carnegie's Birthplace museum, the Abbey and Abbots house reflect the historic interest of the City, whilst recent developments have seen Dunfermline move into the modern era. Dunfermline is located approximately five miles from the Forth Road Bridge and is therefore particularly popular with commuters to Edinburgh and many parts of the central belt with easy access to the M90 motorway with its direct links to Edinburgh, Perth and Dundee and across the Kincardine Bridge by ways of motorways to Stirling, Glasgow and the West. It benefits from a full range of shops, social and leisure facilities and educational establishments associated with a modern City. The local railway station provides a regular service to Edinburgh with inter city links to other parts of the UK. There are regular and convenient bus services both local and national. Establishments associated with a modern City. The local railway station provides a regular service to Edinburgh with inter city links to other parts of the UK. There are regular and convenient bus services both local and national.

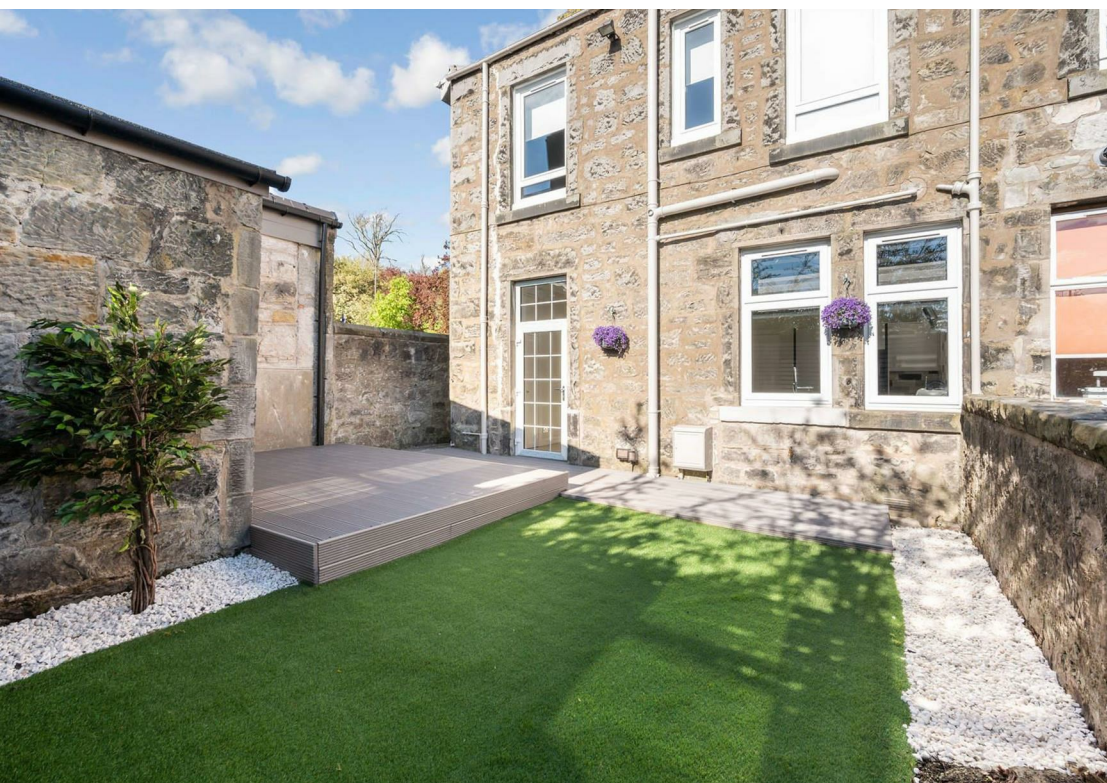
EXTRAS INC. IN SALE

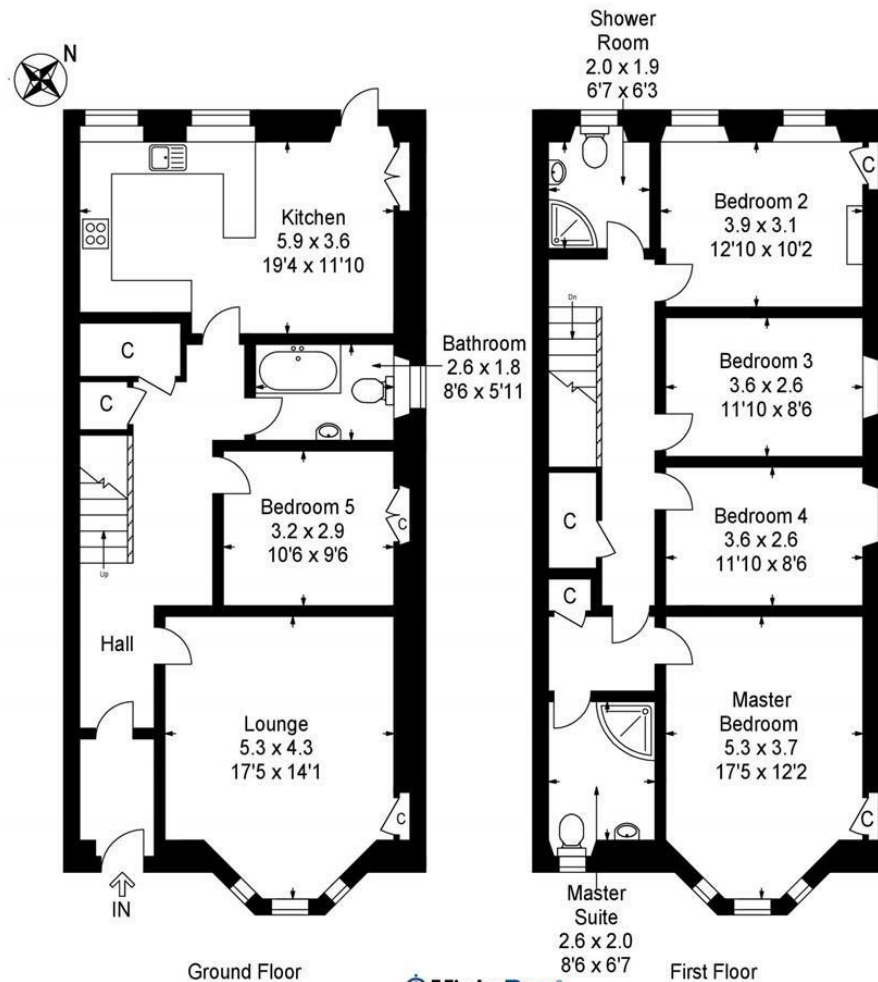
All floor coverings, blinds, bathroom and light fittings together with integrated appliances.











VistaBee
DIGITAL CONTENT CREATION

This plan is for layout guidance only and is not drawn to scale. Whilst every care is taken in the preparation of this plan, please check all dimension and shapes before making any decision reliant upon them. All room dimensions taken through cupboard/wardrobes to wall surface where possible or to surfaces indicated by arrow heads. (ID 110927)

© VistaBee 2022



SOLICITORS | PROPERTY

33 East Port, Dunfermline, Fife, KY12 7JE

Tel: 01383 620222 Fax: 01383 621213

www.morganlaw.co.uk



espc

rightmove

Zoopla.co.uk

onTheMarket.com

s1homes.com

naea | propertymark

PROTECTED

AGENTS NOTE These particulars do not form part of any contract and the statements or plans contained herein are not warranted nor to scale. Approximate measurements have been taken by electronic device at the widest point. Services and appliances have not been tested for efficiency or safety and no warranty is given as to their compliance with any Regulations. No movable items will be included in the sale.